

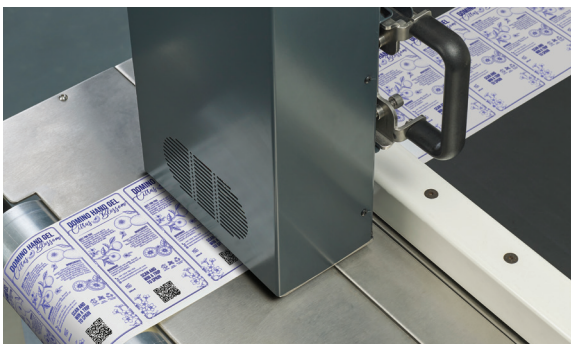
# K300, Fast, Smart and Reliable

The Perfect High Resolution Solution for Variable Data Printing

The **K300** digital printer has been developed to be versatile and provide high quality printing in a variety of applications.

The 600 dpi high-resolution monochrome variable data printing capabilities are ideal for late stage customisation including 2D coding to cater for the increase in demand for unique QR codes.

The **K300** is a new platform, building on the legacy of the Domino **K-Series**, with advanced high speed architecture to support the very latest print engine technology.



## A wide range of applications

The **K300** can be used for late stage customisation overprinting pre-printed material and allows for greater flexibility to the production process.

- ◆ Web applications (labels, forms, tickets)
- ◆ Sheet applications (codes on stamps, plastic cards, security products, late-stage personalization, transactional print)
- ◆ High-Speed mailing applications (addressing, personalizing magazines, cards, letters, envelopes, postal voting)
- ◆ Tag Printing, Barcode Printing (including QR Codes)

## Fast

With speeds of up to 250 metres per minute, the **K300** is ideal for adding unique codes and batch information to pre-printed materials, reducing the need for stock holding of packaging and enabling short run, short lead time demands to be met cost effectively.

- ◆ Rapid Startup: Less than 1 minute warm start time possible with 'Printer Sleep Mode' also available
- ◆ 125 m/min at 600 dpi and 250m/min for 300 dpi

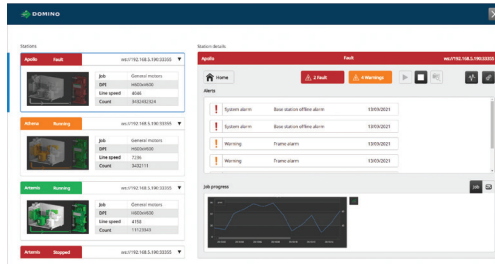
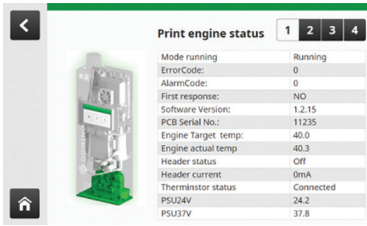
## Flexible

- ◆ 54.1mm width with 1 print station or 108.2mm with 2 print stations for multihead applications
- ◆ Flexible controller options available from simple stand-alone operation or OEM system integration through to multi-head installations
- ◆ Advanced data and process management

[www.domino-printing.com](http://www.domino-printing.com)

**Domino. Do more.**

# A powerful and versatile digital coding solution



## Smart User Interface

The 5" colour TFT touchscreen included in the Print Station is simple and intuitive to use for day-to-day operation and system status. The companion **QuickStep K** a Windows based application used for configuration, diagnostics and for managing multiple print heads.

**Editor Starlight**, for designing flexible job layouts.

## Technical Outline Specifications

SECTION	PARAMETER	K300
PRINT SPECIFICATION	Print Station:	1x1280 channels (per Print Station)
	Print Width:	54.1mm or 108.2mm with 2 print stations
	Optimum Throw Distance:	1-3mm
	Maximum line speed:	250m/min (4.2m/s) at 600 x 300 dpi 125m/min (2.1m/s) at 600 x 600 dpi
	Resolution:	600 dpi across head perpendicular to product movement 300, 600, 900 and 1,200 dpi parallel to product movement
	Fonts:	Any True Type (unless onboard render mode)
	Label Creation:	Editor Starlight
	Product Detect:	Maximum of 2 per Base Unit
	Label Information:	Max SD card storage: 1000 labels 288-character variable data per label
	Element Types:	Text graphics Postnet, Planet, IBM, RM, 4State, ITF, EAN128 Data Matrix & QR Codes
MECHANICAL SPECIFICATION	Ink Types:	UV cure ink RK-002BKUV AQ Ink RK-601 BKAQ (EuPIA GMP) RK-691 BKAQ
	Dimensions:	Base Unit: 383mm (H) x 430mm (W) x 340mm (D) Print Station: 450mm (H) x 165mm (W) x 90mm (D)
	Weight:	Print Station: 7kg (Approx) Base Station: 19kg (Approx)
ELECTRICAL SUPPLY	Conduit Lengths:	1.5m, 2.5m or 4.5m
	Voltage:	100-240 Vac, 50/60 Hz
	Power:	600W (Maximum)
ELECTRONIC SPECIFICATION PER PRINT STATION	Fuse:	6.3A
	Storage:	1x SD 32GB or equivalent
	Display:	800 x 480 colour TFT per Print Station
	Encoders:	2 Maximum (Differential or Opto)
	Connectivity:	Per print station: 1x RS232 1x Ethernet 6 Bit Input (Opto) 6 Bit Output (Opto)
ENVIRONMENT	Status:	Maximum loaded labels: 255
	Operational Temperature:	10-40°C *
	Storage Temperature:	5-30°C
	Operational Noise:	<70dB

\* Maximum operational capabilities dependent on the acceptable range for specific ink.

